

# Emblem



## NASSIMI

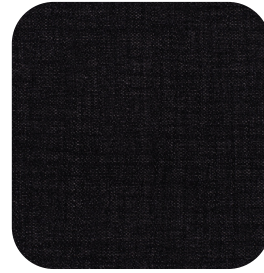
Curated Textile Collection : Fabrics / Woven  
High-Performance  
100,000+ Abrasion

# Nassimi

# Emblem



Greenwich / Mineral  
MGRS-15



Como / Asphalt  
NCOP-01



Perry Wool / Carbon  
MPWL-08



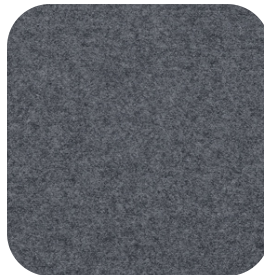
Greenwich / Caviar  
MGRS-04



Greenwich / Chrome  
MGRS-05



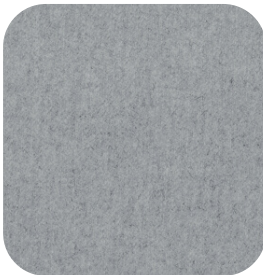
Como / Fog  
NCOP-12



Perry Wool / Cobblestone  
MPWL-10



Como / Monochrome  
NCOP-16



Perry Wool / Fog  
MPWL-13



Como / Dawn  
NCOP-07



Como / Limestone  
NCOP-15



Perry Wool / Silver Grey  
MPWL-26

# Nassimi

# Emblem



Como/ Coastal  
888-8888



Greenwich/ Sapphire  
MGRS-20



Como / Night  
NCOP-17



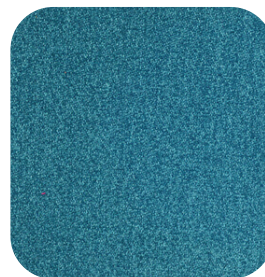
Perry Wool / Admiral  
MPWL-01



Perry Wool / Water  
MPWL-28



Greenwich / Lagoon  
888-8888



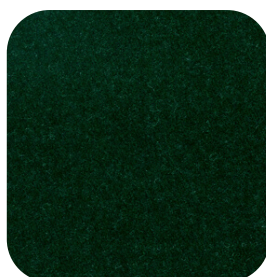
Perry Wool / Aquatic  
MPWL-02



Perry Wool / Grass  
MPWL-16



Greenwich / Forest  
MGRS-08



Perry Wool / Loden  
MPWL-19



Como / Evergreen  
NCOP-10



Como / Fennel  
NCOP-11

# Nassimi

# Emblem



Greenwich / Cream  
MGRS-07



Greenwich / Antique  
MGRS-02



Perry Wool / Mustard  
MPWL-23



Como / Rhubarb  
NCOP-22



Perry Wool / Foliage  
MPWL-14



Perry Wool / Oatmeal  
888-8888



Perry Wool / Camel  
888-8888



Greenwich / Sesame  
MGRS-21



Perry Wool / Merlot  
MPWL-21



Como / Downy  
NCOP-08



Como / Branch  
NCOP-04



Greenwich / Pecan  
MGRS-16



Como / Cowboy  
NCOP-06



Perry Wool/ Cafe  
MPWL-05

# Nassimi



Top: Perry Wool Fog  
Below: Perry Wool Cobblestone



# Emblem



Top: Greenwich Chrome  
Below: Como Limestone



## **Perry Wool**

Performance wool blend with classic heathered appearance.

Content: 70% wool / 20% Polyester / 5% Nylon / 5% Acrylic

Stain Resistant: Resilience TX

Abrasion: 100,000+ double rubs, Wyzenbeek

Cleaning Code: S

[View more details and order memo samples here.](#)

## **Como**

Soft, chenille-like weave with the extreme durability of a vinyl. Unique liquid-barrier backing.

Content: 92% Polyester / 6% Polyurethane / 2% Silicone

Stain Resistant: Supreen

Abrasion: 100,000+ double rubs, Wyzenbeek

Cleaning Code: SW / Bleach cleanable, 10% dilution

[View more details and order memo samples here.](#)

## **Greenwich**

Subtle herringbone weave and wool-like hand that tailors beautifully.

Content: 100% Polyester

Stain Resistant: Resilience TX

Abrasion: 100,000+ double rubs, Wyzenbeek

Cleaning Code: SW / Bleach cleanable, 10% dilution

[View more details and order memo samples here.](#)



# NASSIMI Emblem

## Emblem Program

Colors and patterns on this card are offered as part of Emblem's graded-in textile program and are kept in stock for quick shipment. Other colors and patterns shown on the Nassimi website may also be available. Please contact us at [hello@emblembuilt.com](mailto:hello@emblembuilt.com) to receive a custom quote.

Memo samples for all textiles shown can be ordered at [Nassimi.com](http://Nassimi.com), or you may email your memo request to [hello@emblembuilt.com](mailto:hello@emblembuilt.com).

Please note that Nassimi is a high-volume wholesale supplier only and does not offer fabrics by the yard on its website.

## Cleaning Codes

SW: Clean only with water-based or solvent-based cleaner. Do not saturate.

S: Spot clean using water-free solvent or dry cleaning product. Professional cleaning recommended.

## Abrasion

Abrasion has been tested with the Wyzenbeek method using either cotton duck (CD) or wire screen (WS) as the abradant. ACT guidelines require at least 30,000 Wyzenbeek double rubs or 40,000 Martindale cycles for woven upholsteries, or 50,000 Wyzenbeek double rubs for coated upholsteries in heavy duty single-shift application. Multiple factors affect fabric durability and appearance retention, including end-user application and proper maintenance. Wyzenbeek results above 100,000 double rubs have not been shown to be an indicator of increased lifespan.

**Other details and specifications can be found at [nassimi.com](http://nassimi.com).**