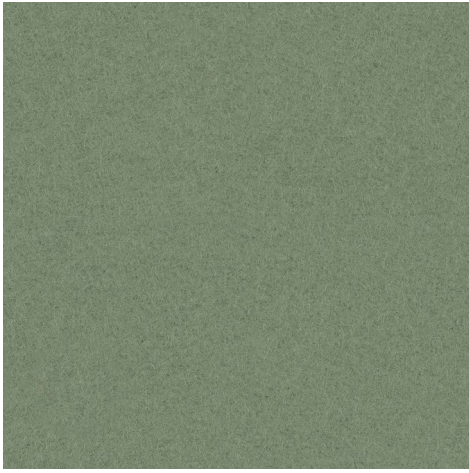


Wool Inspiration Card

Divina 3
Divina MD
Divina Melange 3
Hero 2
Re-wool
Steelcut Quartet
Steelcut Trio 3

Emblem

kvadrat



Divina 3
856



Hero 2
912



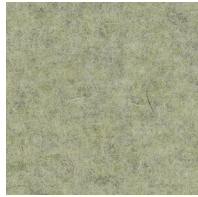
Divina 3
936



Re-wool
408



Divina 3
956



Divina MD
913



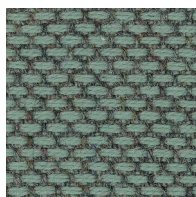
Hero 2
962



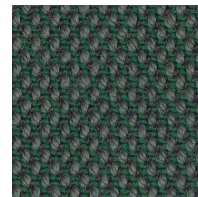
Divina MD
943



Divina MD
843



Re-wool
858



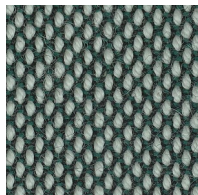
Steelcut Trio 3
966



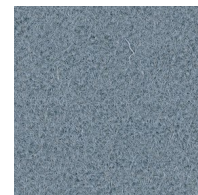
Hero 2
942



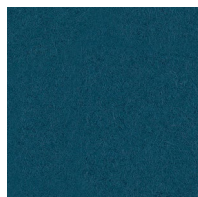
Divina Melange 3
821



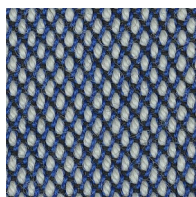
Steelcut Trio 3
916



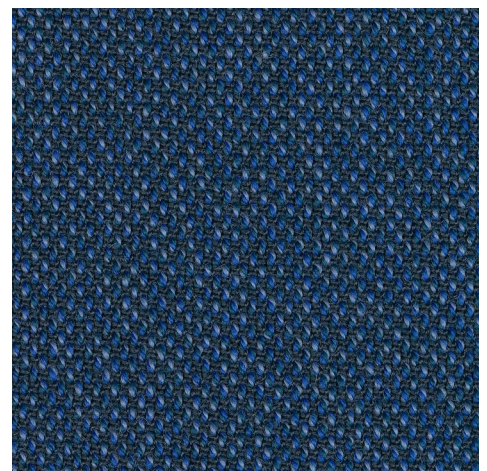
Hero 2
732



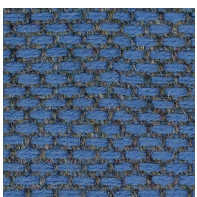
Divina 3
893



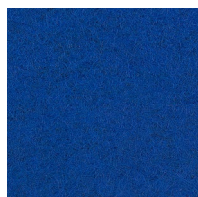
Steelcut Trio 3
716



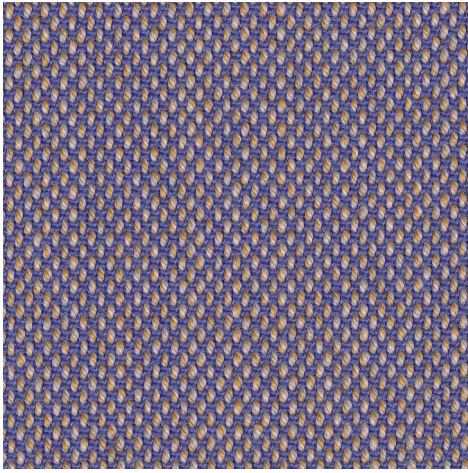
Steelcut Quartet
764



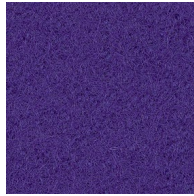
Re-wool
758



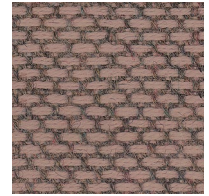
Divina Melange 3
757



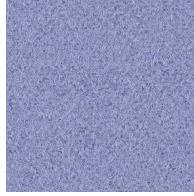
Steelcut Quartet
644



Hero 2
672



Re-wool
648



Hero 2
622



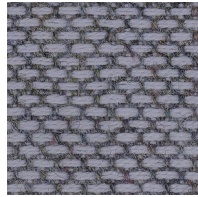
Divina Melange 3
617



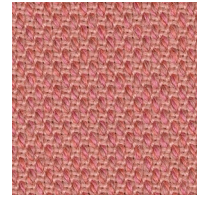
Divina 3
671



Hero 2
162



Re-wool
658



Steelcut Quartet
534



Divina MD
733



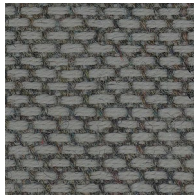
Steelcut Quartet
654



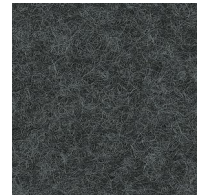
Hero 2
392



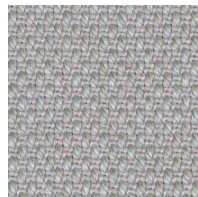
Re-wool
108



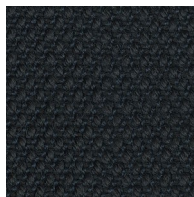
Re-wool
158



Divina Melange 3
170



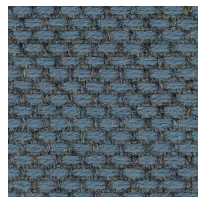
Steelcut Quartet
114



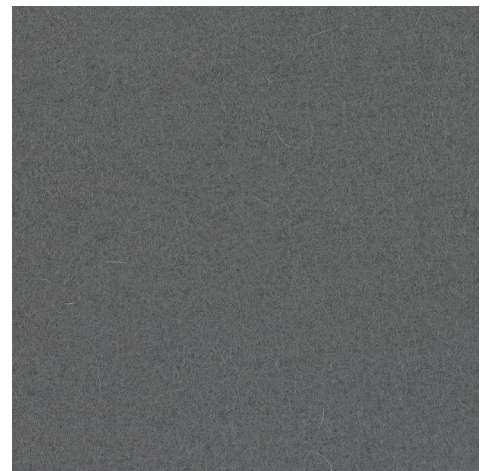
Steelcut Trio 3
195



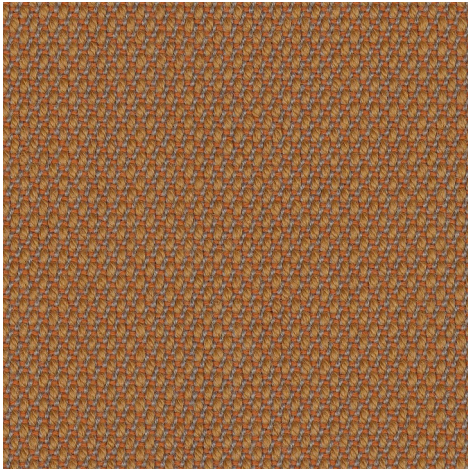
Divina MD
193



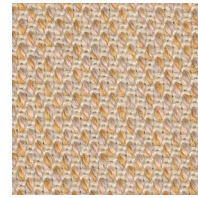
Re-wool
768



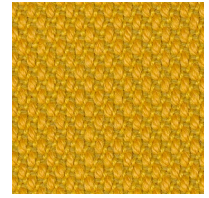
Divina 3
173



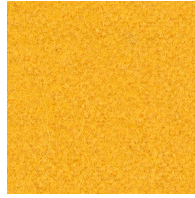
Steelcut Trio 3
436



Steelcut Quartet
414



Steelcut Trio 3
446



Hero 2
422



Re-wool
458



Divina Melange 3
557



Re-wool
448



Hero 2
242



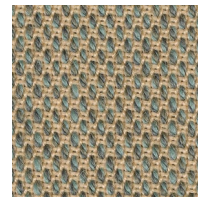
Divina MD
213



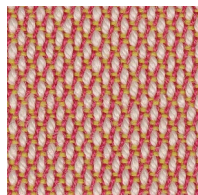
Re-wool
568



Hero 2
352



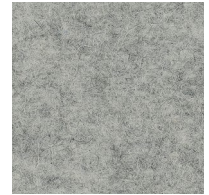
Steelcut Quartet
924



Steelcut Trio 3
515



Re-wool
218



Divina Melange 3
120



Re-wool
628



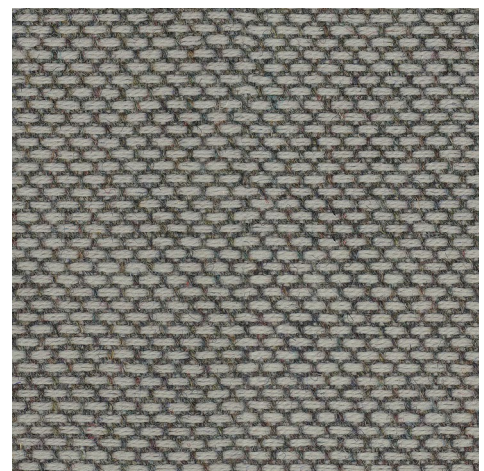
Divina MD
343



Divina Melange 3
227



Divina 3
944



Re-wool
128

Divina 3

Designed by Finn Sködt
100% new wool
Direction: ↔
Width: approx. 150cm (59")
Abrasion: 45,000 Martindale
Click here for full Technical Specifications.

Re-wool

Designed by Margrethe Odgaard
45% recycled wool, 45% new wool, worsted,
10% nylon
Direction: ↔
Width: approx. 140cm (55")
Abrasion: 100,000 Martindale
Click here for full Technical Specifications.

Divina MD

Designed by Finn Sködt
100% new wool
Direction: ↔
Width: approx. 150cm (59")
Abrasion: 45,000 Martindale
Click here for full Technical Specifications.

Steelcut Quartet

Designed by Giulio Ridolfo
90% new wool, worsted, 10% nylon
Direction: ↕
Width: approx. 140cm (55")
Abrasion: 100,000 Martindale
Click here for full Technical Specifications.

Divina Melange 3

Designed by Finn Sködt
100% new wool
Direction: ↔
Width: approx. 150cm (59")
Abrasion: 45,000 Martindale
Click here for full Technical Specifications.

Steelcut Trio 3

Designed by Frans Dijkmeijer & Giulio Ridolfo
90% new wool, worsted, 10% nylon
Direction: ↕
Width: approx. 140cm (55")
Abrasion: 100,000 Martindale
Click here for full Technical Specifications.

Hero 2

Designed by Patricia Urquiola
97% new wool, 3% recycled nylon
Direction: ↕
Width: approx. 140cm (55")
Abrasion: 45,000 Martindale
Click here for full Technical Specifications.

10^{year}
warranty



Quality and environmental system accreditation according to ISO 9001 and ISO 14001.

Contact and further information www.kvadrat.dk

US contact info: 1-800-620-9309