

# The Emblem Collection

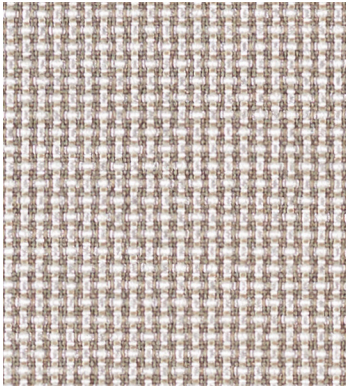
**DESIGNTEX**

**Hard working solids and textures  
ideal for high traffic environments**

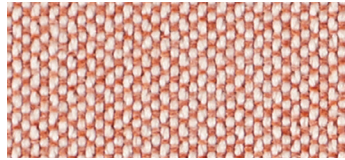
Quick Ship Options Available

- High Abrasion
- Compatible with Disinfectants
- No Antimicrobials
- No Flame Retardants
- HPD
- Meets Mindful Materials Sustainability Criteria
- Contributes to WELL Building Criteria
- Contributes to LEED Building Criteria
- Prop 65 Compliant





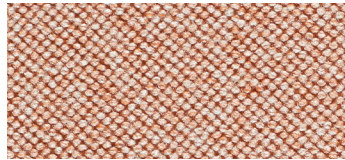
**Crossweave Flax**  
3762-101



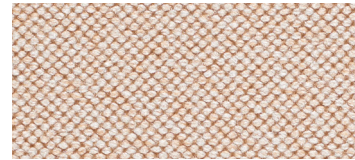
**Rocket Rose Quartz**  
2693-304



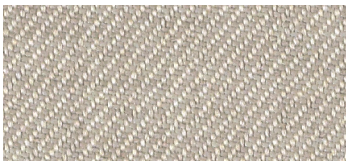
**Rocket Linen**  
2693-105



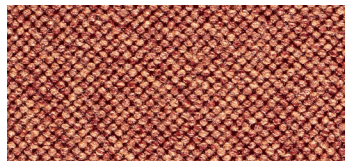
**Woolish Pink Salt**  
3973-701



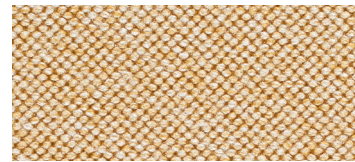
**Woolish Quartz**  
3973-301



**Gamut Pebble**  
3468-803



**Woolish Red Rock**  
3973-702



**Woolish Wheat**  
3973-201



**Tweed Multi Taupe**  
3722-101



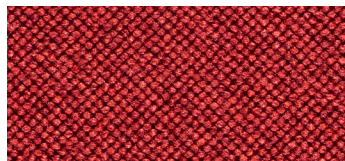
**Rocket Terracotta**  
2693-703



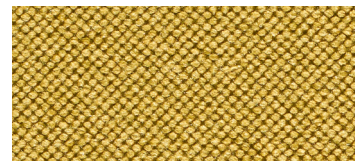
**Tweed Multi Yellow**  
3722-201



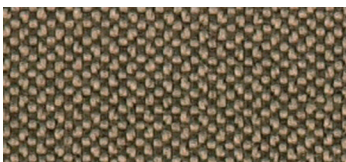
**Tweed Multi Dark Taupe**  
3722-103



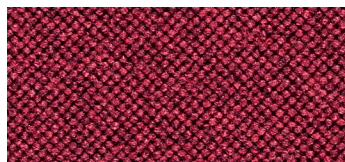
**Woolish Tomato**  
3973-302



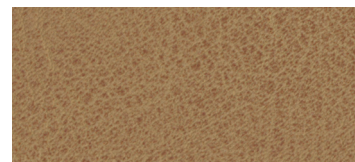
**Woolish Canary**  
3973-202



**Rocket Taupe**  
2693-103



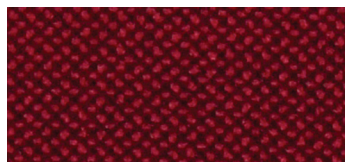
**Woolish Beet**  
3973-303



• **Rein Camel**  
3010-201



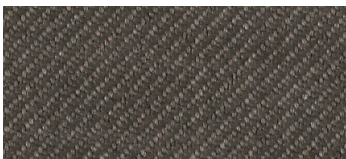
• **Rein Sable**  
3010-103



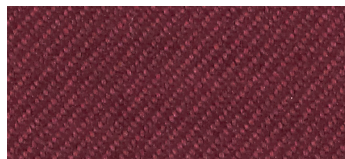
**Rocket Ruby**  
2693-302



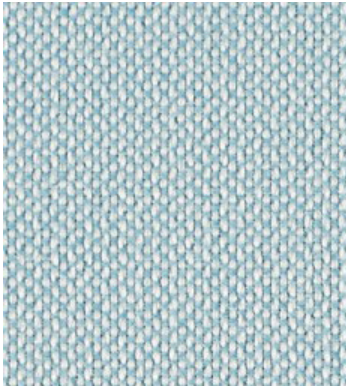
• **Rein Clay**  
3010-701



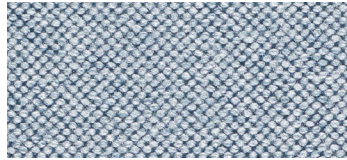
**Gamut Cobblestone**  
3468-811



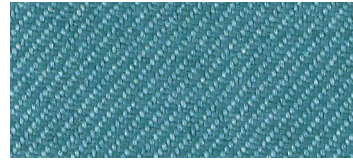
**Gamut Port**  
3468-305



**Rocket** Sea Salt  
2693-406



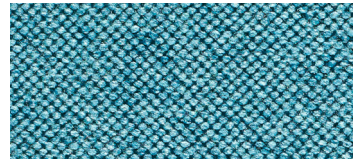
**Woolish** Sky  
3973-403



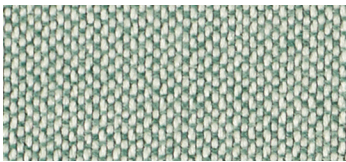
**Gamut** Cerulean  
3468-402



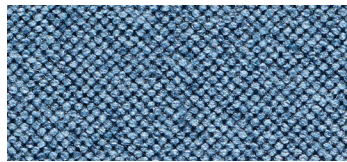
**Tweed Multi** Medium Blue  
3722-401



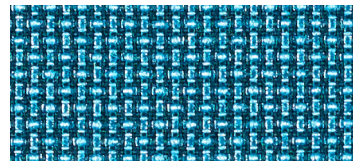
**Woolish** Pool  
3973-404



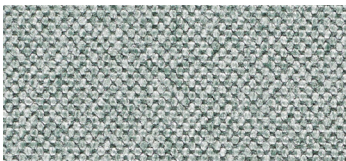
**Rocket** Olivine  
2693-507



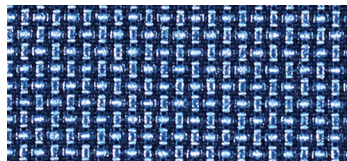
**Woolish** Denim  
3973-406



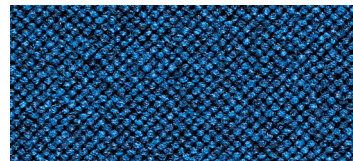
**Crossweave** Freshwater  
3762-402



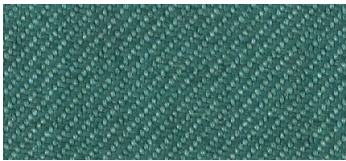
**Woolish** Sage  
3973-503



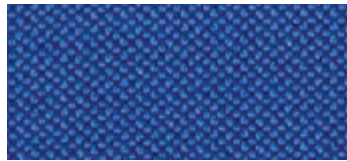
**Crossweave** Lake  
3762-401



**Woolish** Cadet  
3973-409



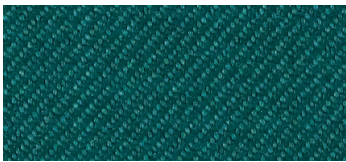
**Gamut** Macaw  
3468-404



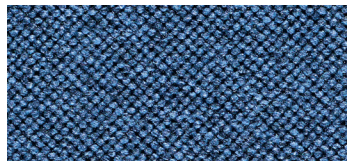
**Rocket** Bright Blue  
2693-401



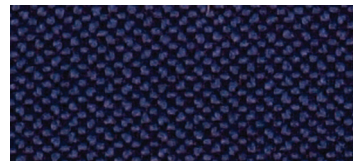
**Gamut** Navy  
3468-407



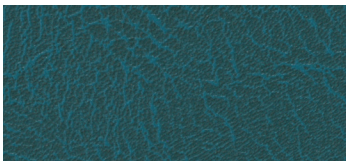
**Gamut** Spruce  
3468-406



**Woolish** Delft  
3973-408



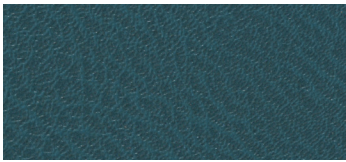
**Rocket** Navy  
2693-404



• **Rein** Canal  
3010-401



**Gamut** Deep Ocean  
3468-405



• **Rein** Stellar  
3010-402



• **Rein** Dive  
3010-403



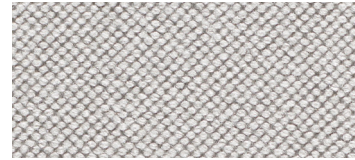
**Gamut** Ink  
3468-408



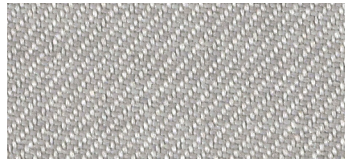
**Tweed Multi Light Grey**  
3722-801



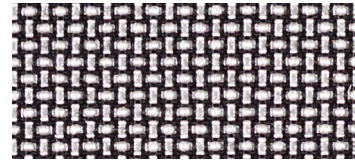
**Gamut Chalk**  
3468-101



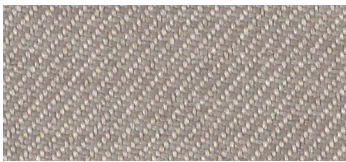
**Woolish Gull**  
3973-801



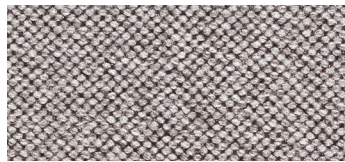
**Gamut Ash**  
3468-805



**Crossweave Penguin**  
3762-802



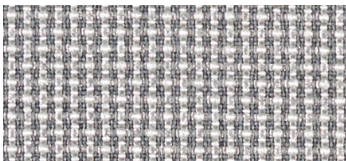
**Gamut Stone**  
3468-806



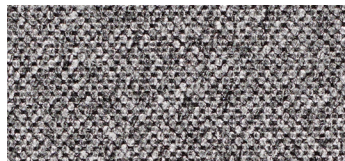
**Woolish Mica**  
3973-803



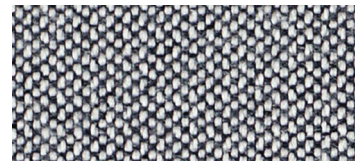
**Gamut Grey**  
3468-814



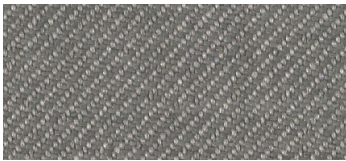
**Crossweave Soapstone**  
3762-801



**Woolish Osprey**  
3973-804



**Rocket Osprey**  
2693-804



**Gamut Pewter**  
3468-808



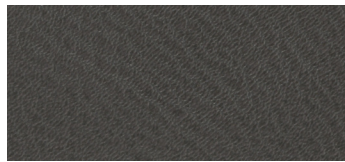
**Gamut Shale**  
3468-813



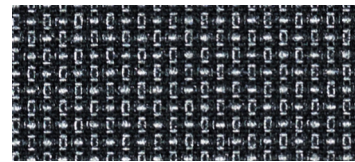
**Tweed Multi Medium Grey**  
3722-802



**Gamut Graphite**  
3468-810



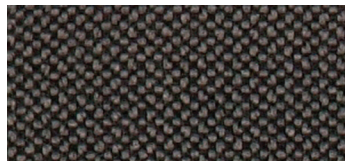
● **Rein Graphite**  
3010-803



**Crossweave Seal**  
3762-803



**Gamut Carbon**  
3468-812



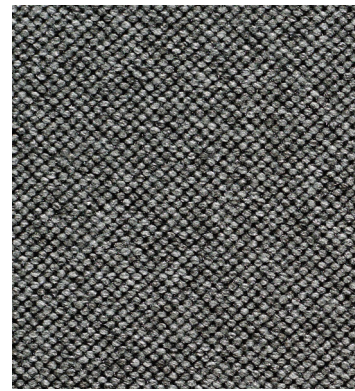
**Rocket Graphite**  
2693-801



**Rocket Ink**  
2693-802



● **Rein Inkwell**  
3010-804



**Woolish Charcoal**  
3973-805

# The Emblem Collection

Style Name	Style #	Content	Finish	Cleaning	Width	Abrasion	Multi-Use	Recycled Content
Crossweave	3762	66% Polyester (Postconsumer Recycled, Solution Dyed), 34% Polyester	None	WS	54 inches (137 cm)	100,000 Wyzenbeek double rubs (CD)	•	•
Gamut	3468	100% Polyester (Postconsumer Recycled)	Stain Repellent	WS	54 inches (137 cm)	100,000 Wyzenbeek double rubs (CD)	•	•
Rein	3010	100% Vinyl (without Harmful Phthalates)	Advanced Protective Topcoat	WS Bleach (10:1)	54 inches (137 cm)	1,000,000 Wyzenbeek double rubs (CD)		
Rocket	2693	72% Polyester (Postconsumer Recycled), 28% Polyester	Nanotechnology Stain Resistant	WS	54 inches (137 cm)	100,000 Wyzenbeek double rubs (CD)	•	•
Tweed Multi	3722	59% Polyester, 41% Acrylic	Stain Repellent	WS	54 inches (137 cm)	70,000 Wyzenbeek double rubs (CD)		
Woolish	3973	85% Polyester (Postconsumer Recycled), 15% Polyester	Nanotechnology Stain Resistant	WS	54 inches (137 cm)	400,000 Wyzenbeek double rubs (CD)	•	•

Meets or exceeds these ACT performance standards:



Additional colorways available  
For samples please call 800.221.1540

### Advanced Protective Topcoat

Advanced Protective Topcoat is a PFOA-free, stain-resistant high-performance topcoat intended for all environments, including extreme-condition installations such as hospitality, healthcare, and education. This topcoat provides easier maintenance for the coated upholstery.

### Nanotechnology Stain Resistant Finish

A stain resistant finish that, thanks to the light-weight nature of nanotechnology, preserves a fabric's feel. The finish also allows any bleach-treatable fabric to remain bleach cleanable. Ask your representative about our nanotechnology stain resistant finish providers.

### Cleaning Codes

**Bleach** Treatable with a 4:1 or 10:1 water-to-bleach dilution for the lifetime of the product.

**WS** Clean only with water-based or solvent-based cleaner. Do not saturate.

For regular maintenance of coated fabrics, always rinse the cleaned and/or disinfected area(s) with fresh water. Wipe dry and repeat if necessary.

### Bleach and Disinfectant Testing

All products have been tested with bleach (sodium hypochlorite) and/or a variety of disinfectants (alcohol, hydrogen peroxide, quaternary ammonium). Scan the QR code below for specific test results.

### Abrasion

Abrasion has been tested with the Wyzenbeek method using either cotton duck (CD) or wire screen (WS) as the abrasant, or the Martindale method using worsted wool as the abrasant. ACT guidelines require at least 30,000 Wyzenbeek double rubs or 40,000 Martindale cycles for woven upholsteries, or 50,000 Wyzenbeek double rubs for coated upholsteries in heavy duty single-shift application. Multiple factors affect fabric durability and appearance retention, including end-user application and proper maintenance. Abrasion test results exceeding ACT Performance Guidelines are not an indicator of product lifespan.

### Quick Ship Program

Colors on this card are part of the Quick Ship Program. Orders up to 50 yards ship the next business day.

- Not on Quick Ship Program

## Emblem

www.emblembuilt.com  
hello@emblembuilt.com

Scan code with smartphone camera for additional resources and product information

